



# EM4

## The World's First "Thousand-Beam" Long-Range Digital LiDAR

EM4 is the first long-range digital LiDAR on the EM platform, marking the beginning of the "thousand-beam" era in automotive LiDAR technology. Incorporating RoboSense's new digital architecture, crosstalk elimination, all-condition optical signal processing, and lossless data compression technologies, EM4 delivers groundbreaking performance with up to 1080 beams, a maximum detection range of 600m, and a point rate of 25.92 million points per second.

With its ability to provide 1080P high-definition 3D perception, EM4 redefines the standards for intelligent vehicles, leading L3 and above autonomous driving technologies into a new era of development.

Max number of beams	<b>1080-beam</b>	Point per ssecond	<b>25.92 Million pts/s</b>
Longest ranging	<b>600m</b>	FOV	<b>120°x27°</b>
Digital architecture	<b>SPAD-SoC</b>	Data compression ratio	<b>60%</b>

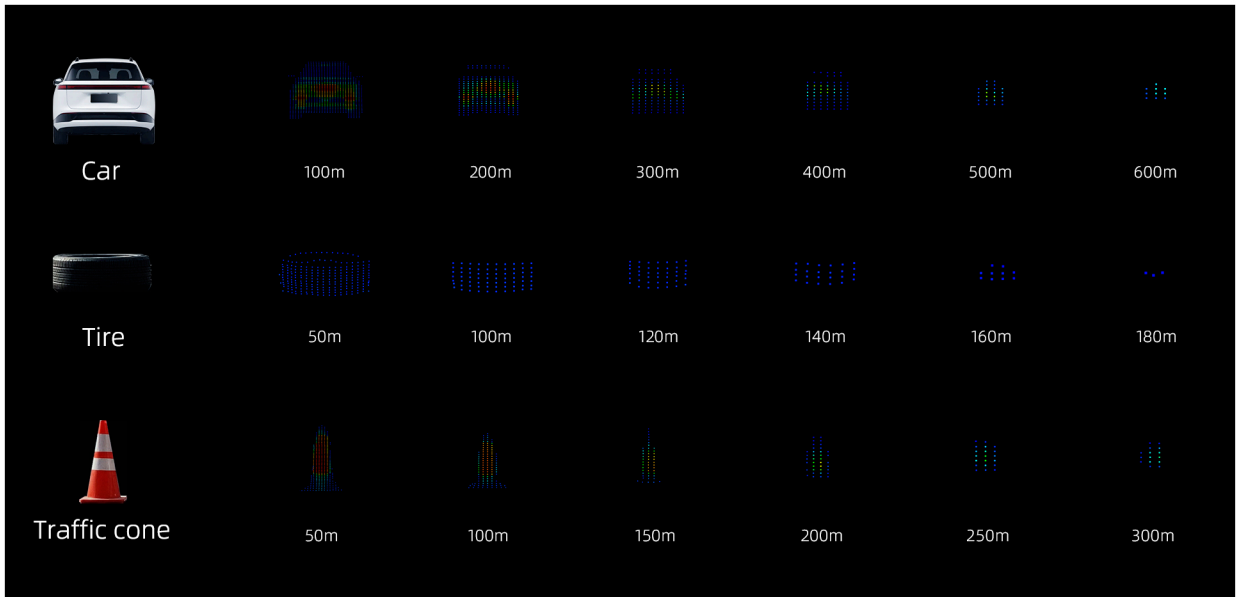
RoboSense / Suteng Innovation Technology Co., Ltd.

RoboSense Global Headquarters – Building 9, Block 2, Zhongguan Honghualing Industry Southern District, 1213 Liuxian Avenue, Taoyuan Street, Nanshan District, Shenzhen, China / 0755-86325830 / service@robosense.cn



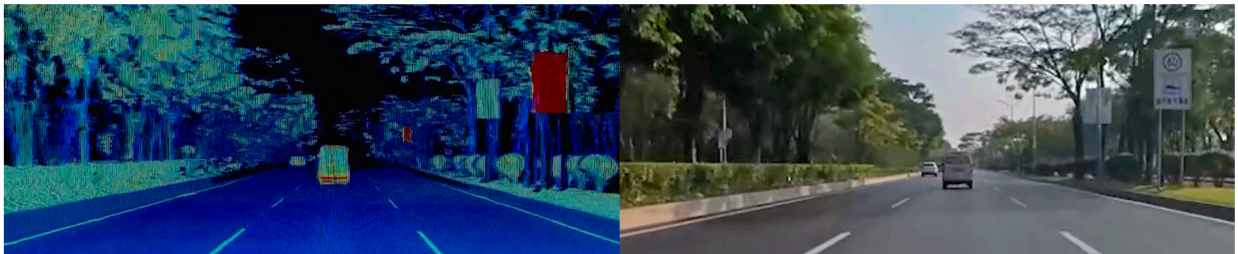
RoboSense

# The World's First 1080-beam LiDAR, Accurate Detection of Distant Objects

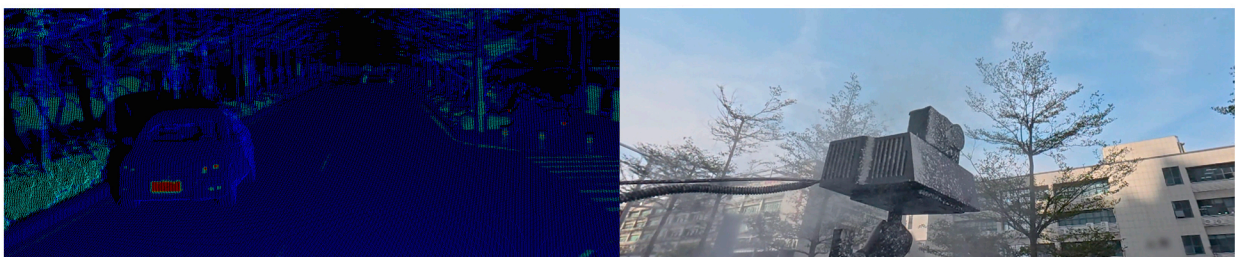


## Exclusive Technologies for All-Condition Mastery

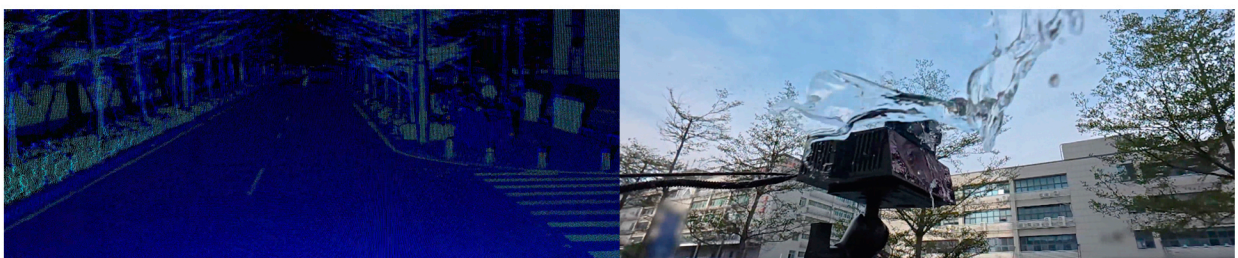
High-Reflection Blooming Suppression



Resilient to Rain, Fog, and Dust

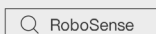


Contamination Resistance



RoboSense / Suteng Innovation Technology Co., Ltd.

RoboSense Global Headquarters – Building 9, Block 2, Zhongguan Honghualing Industry Southern District, 1213 Liuxian Avenue, Taoyuan Street, Nanshan District, Shenzhen, China / 0755-86325830 / service@robosense.cn



[www.robosense.ai](http://www.robosense.ai)